

**THE MACAU ASSOCIATION FOR INTELLECTUAL
DEVELOPMENT SERVICES**
FORMER "THE MACAU ASSOCIATION FOR THE MENTALLY HANDICAPPED"
Casa de Petisco "Sam Meng Chi"

Introduction

Sam Meng Chi is subsidized by Instituto de Accao Social established on December 19, 2002, which provides job training and support to people aged between 16 to 45 with intellectual disabilities, which aims to foster their potential and achieve social integration.

Our Mission

Sam Meng Chi is committed to supporting people with intellectual disabilities through job training, removing the barriers to employment, achieve sustainability that enables individuals to live as empowered citizens.

Services

- Job training (e.g., food preparation, sales, packaging, money transactions, positive attitude in the workplace, communication skills, community education, etc.)
- Supported employment
- One-on-one or group consultation
- Provide consultation and supportive care for people with intellectual disabilities and their family members.
- To enable the community to recognize and accept people with intellectual disabilities through activities
- No less than 6 months of post-placement service is provided to the participants to help them settle in employment and to ensure a harmonious relationship between the employer and the employee.

Target Group

Aged between 16 and 45; adults with mild to moderate intellectual disabilities who have work ability and motivation.

Application Requirements

An official health certificate signed by doctors attests to no severe illnesses or infectious diseases and a medical examination states the potential for employment.

Application Procedure

Parents or guardians should apply through the Rehabilitation Centre of I.A.S. and the application will be referred to Sam Meng Chi.

Allowance

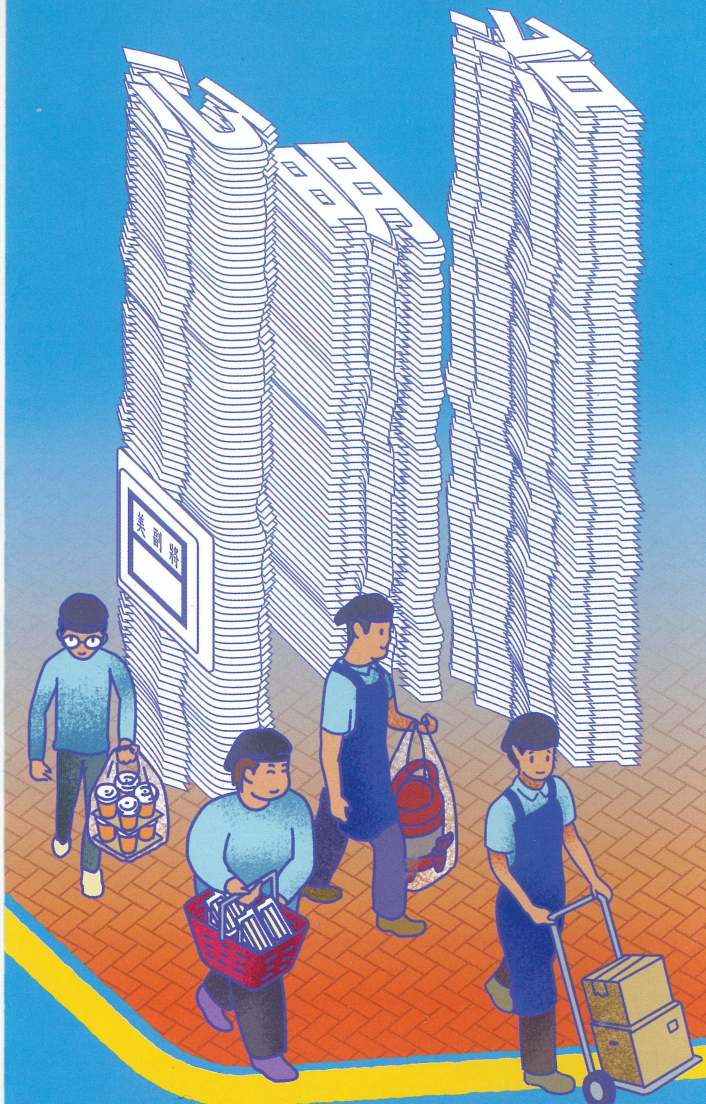
Training allowance is in general calculated according to the kind of job training and the trainees' participation.

Training Period

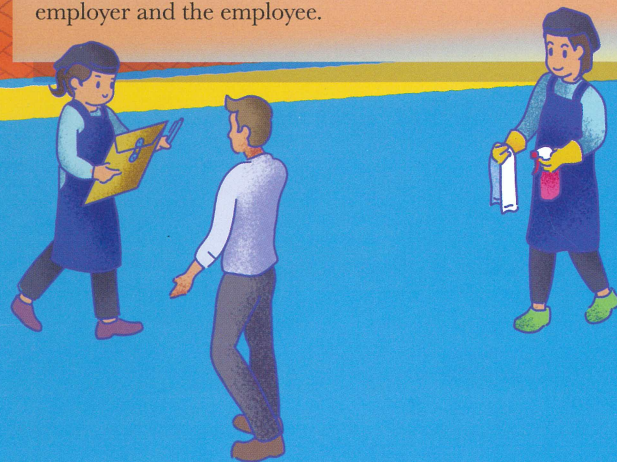
The training period is usually no more than two years. If the student reaches the specific requirements, we will help the student to seek employment, they can apply for a one-year extension of the training period.

Contact Us

Address: Avenida do Coronel Mesquita No11-X, Kou Tei
Wu Tai Ha Res-do-chao A2
Tel: 28481101
Fax: 28481003
E-Mail: casasmc@macau.ctm.net



澳門展智服務協會屬下培訓單位
(前澳門弱智人士服務協會)
心明治
CASA DE PETISCO 小食店
SAM MENG CHI



澳門展智服務協會 (前澳門弱智人士服務協會)

心明治小食店

中心簡介

心明治小食店隸屬於澳門展智服務協會，由社會工作局資助，於2002年12月19日正式開業，專為16至45歲智障人士提供就業培訓及輔助就業，透過實際工作使其發揮潛能，融入社會。

服務理念

- 讓智障人士得到適切的工作訓練；
- 輔助就業及支援服務；
- 幫助智障人士發揮所能，走向公開就業市場，自食其力。

服務項目

- 職業技能培訓(包括食物製作、銷售、錢銀找續工作態度、溝通技巧及認識社區等)；
- 開拓工作及就業機會；
- 提供個別及小組輔導；
- 為智障人士及家屬提供輔導及支援服務；
- 透過活動使社會人士認識及接納智障人士；
- 為協助成功就業的服務對象適應工作及促進僱傭雙方合作，提供不少於六個月的跟進服務。

服務對象

十六歲至四十五歲輕中度智障人士，具工作能力及工作動機。

申請條件

經醫生證明沒有傳染病或嚴重疾病，經評估具有公開就業潛能。

申請手續

家長/監護人向社會工作局申請，由社會工作局轉介至本店。

學員津貼

根據出勤及訓練內容發放津貼及獎金。

服務限期

培訓期限為二年，培訓時間每週42小時，期間如工作能力達到指定的目標時，會協助智障人士到外公開就業，如未達指標者可提出申請延長一年培訓服務。

聯絡方式

地址：澳門美副將大馬路11-X號高地烏大廈地下A2

電話：28481101

傳真：28481003

電郵：casasmc@macau.ctm.net

